



BOE - UPDATE

SEPTEMBER 2, 2015

UPDATE

CONSTRUCTION

LENAPE & HIGH SCHOOL

PROJECTS

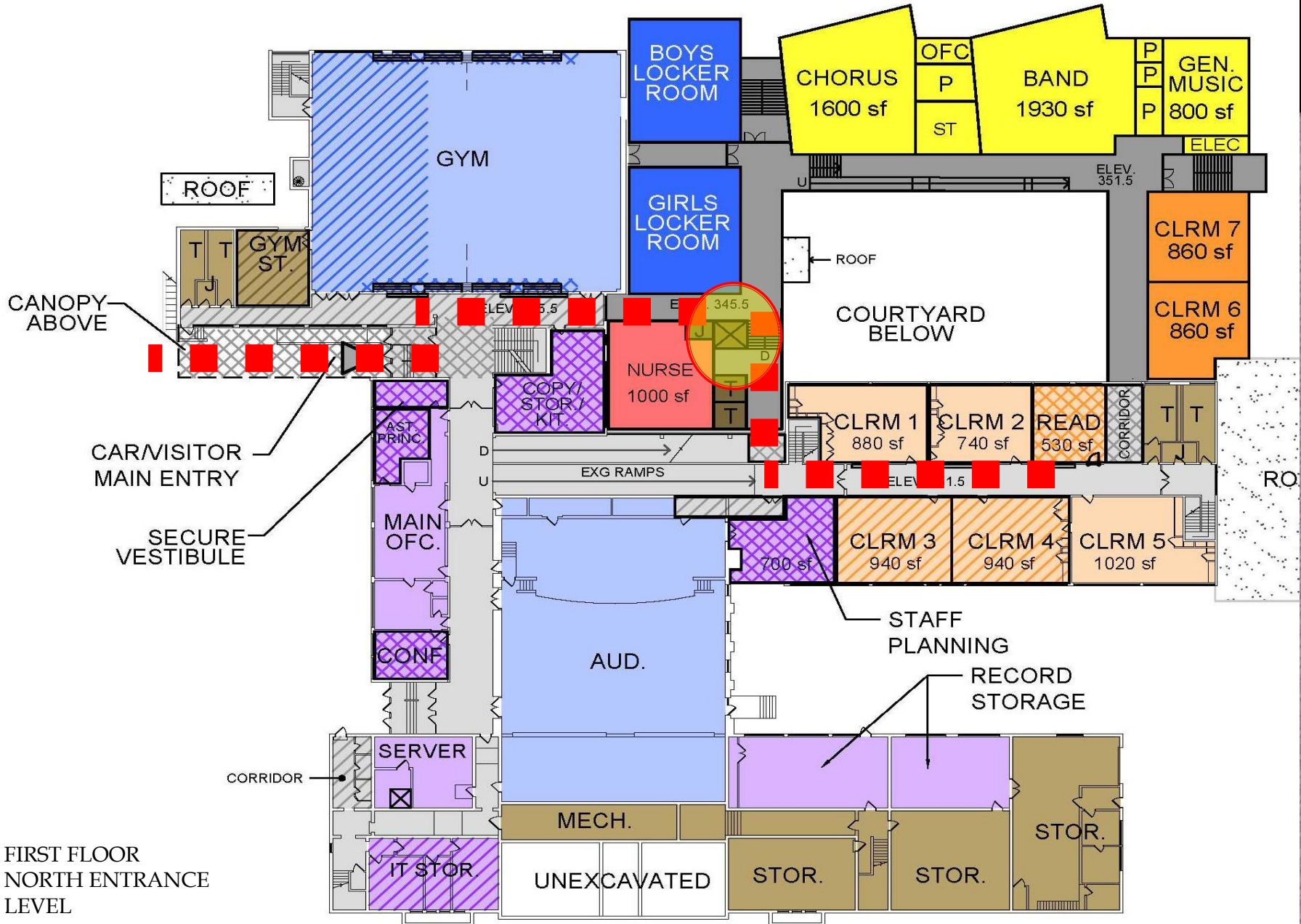
LENAPE & DUZINE
HIGH SCHOOL

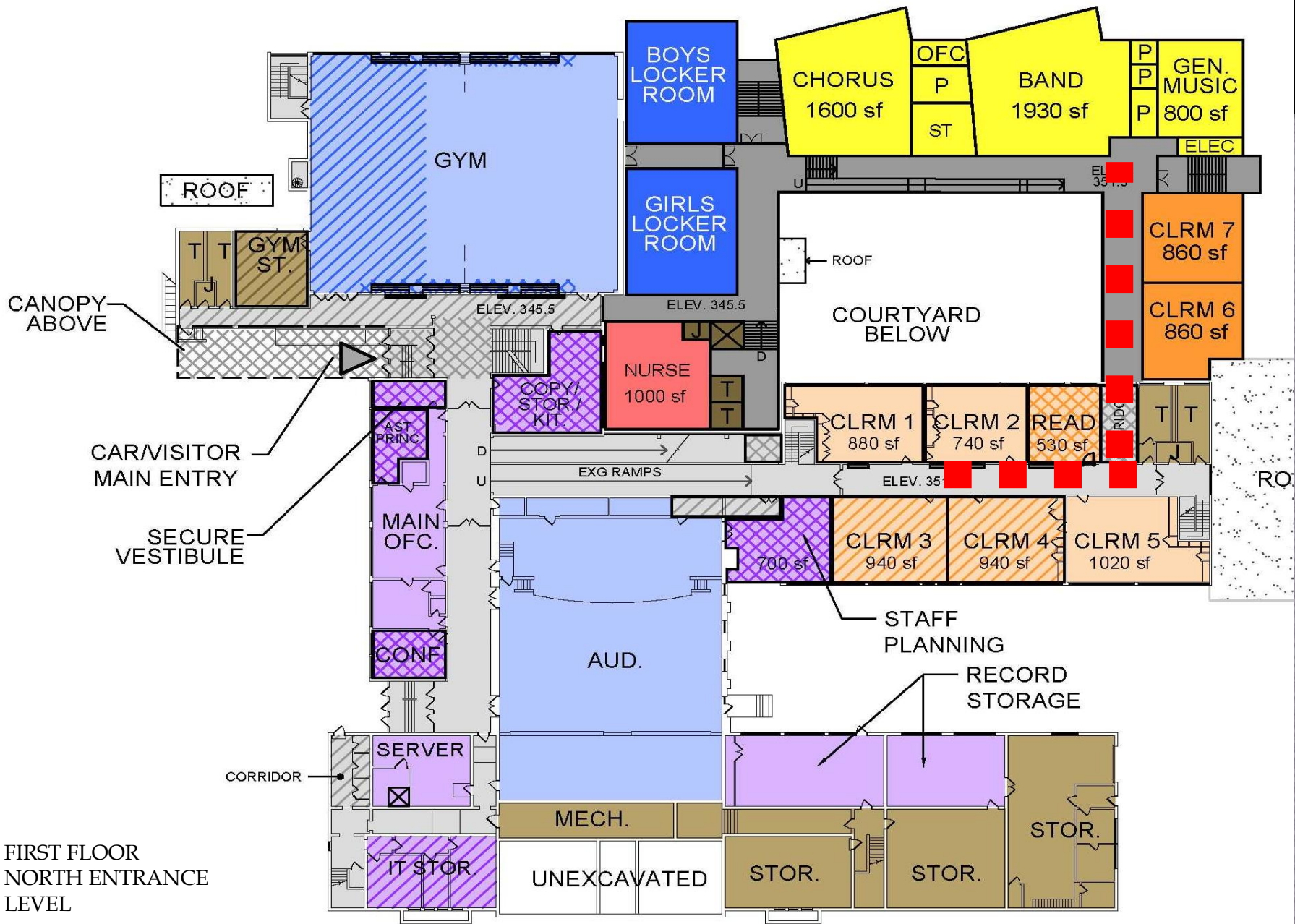
MIDDLE SCHOOL

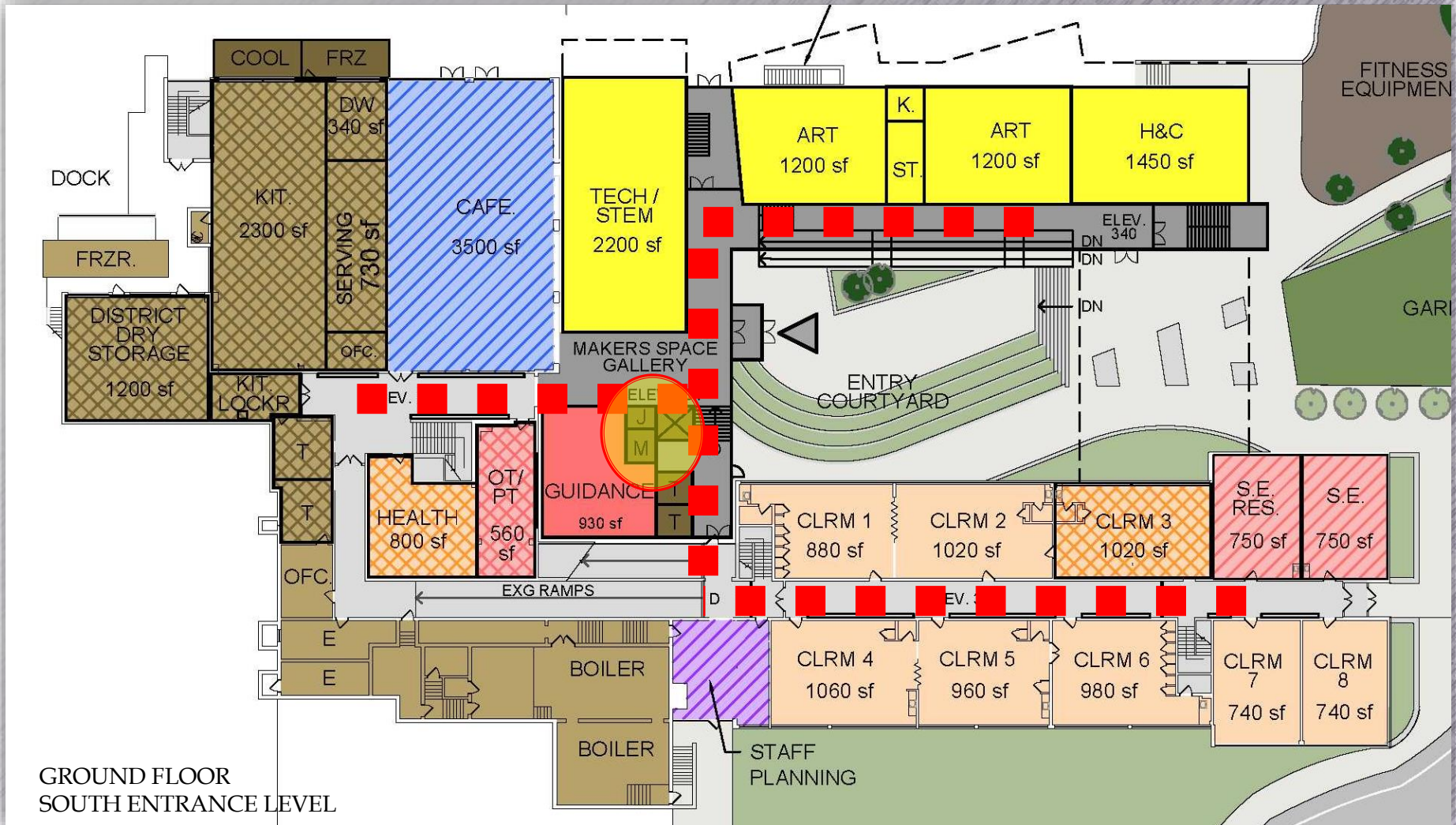


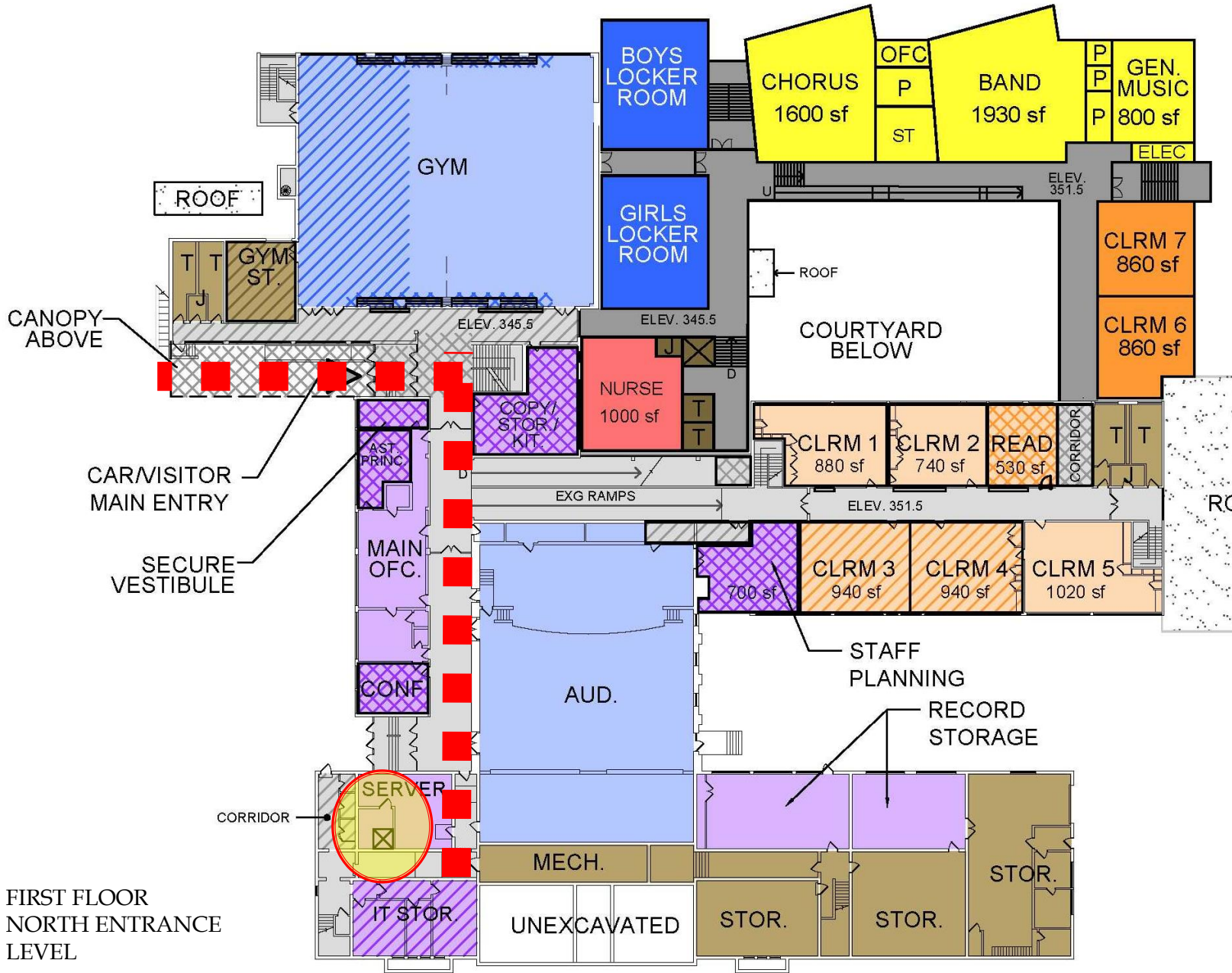
ADA

REVIEW THE ADA SLIDES

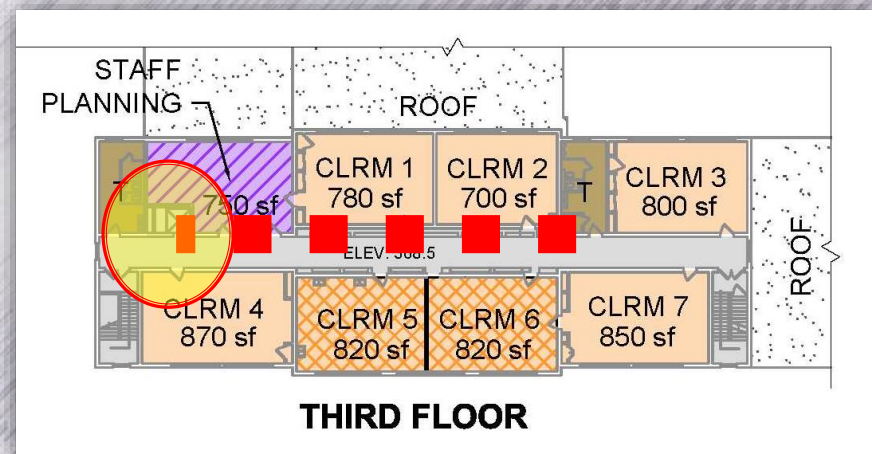
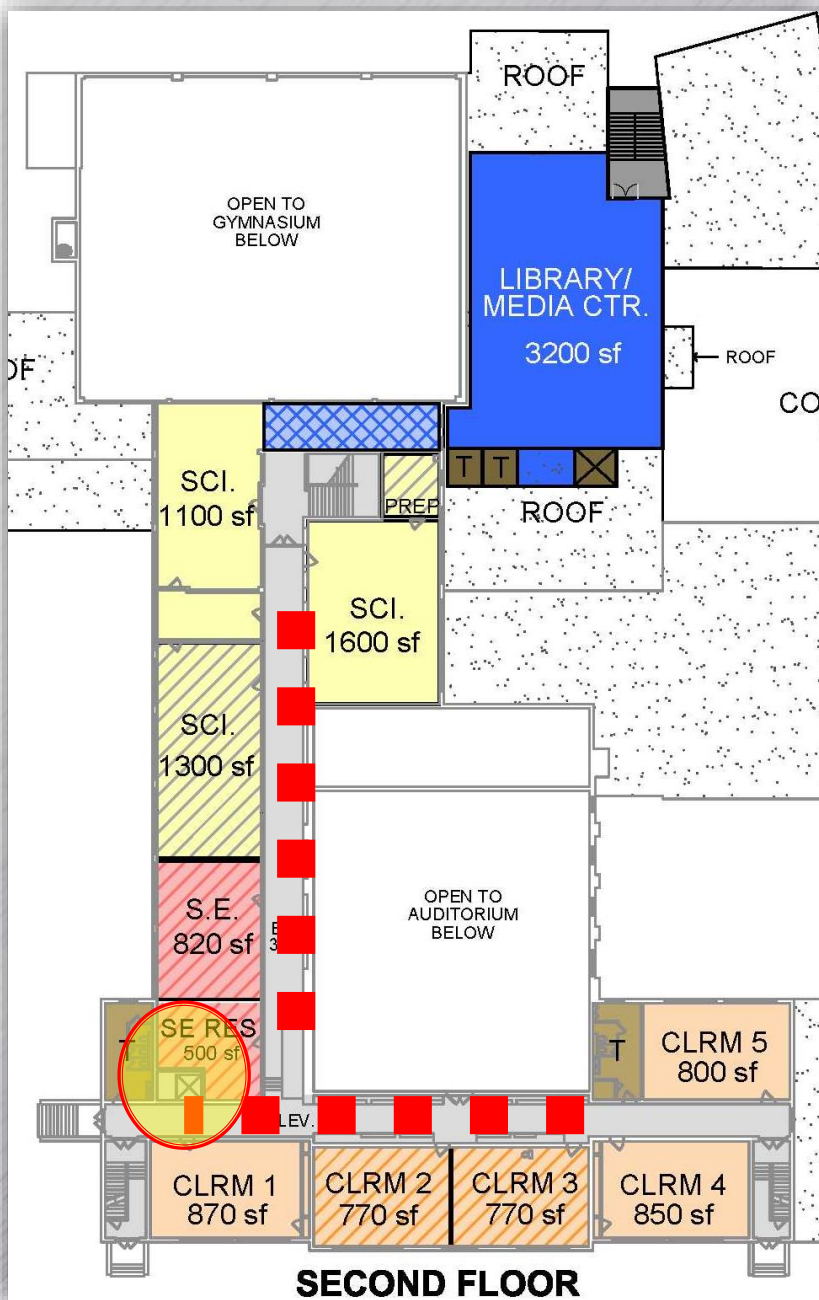


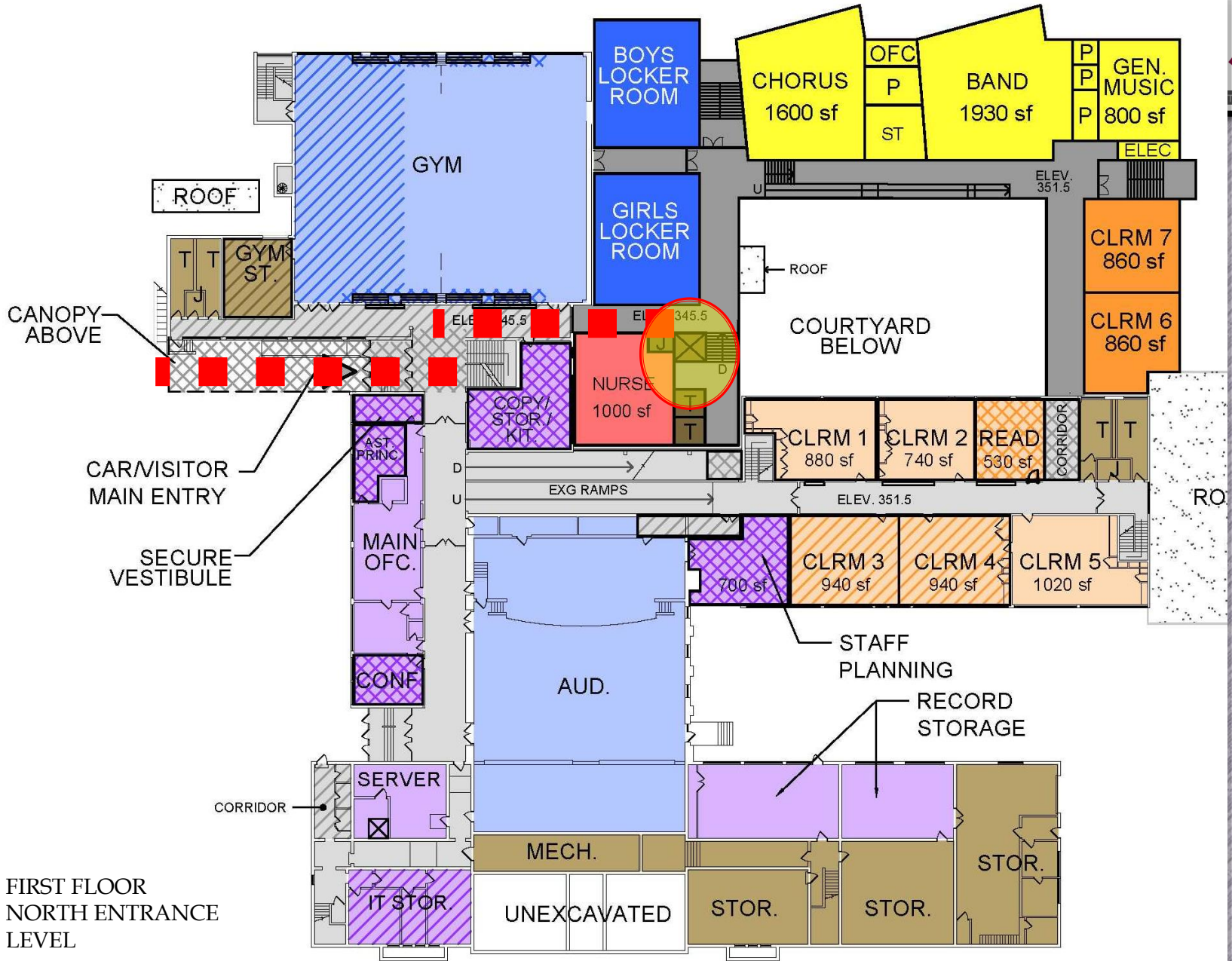




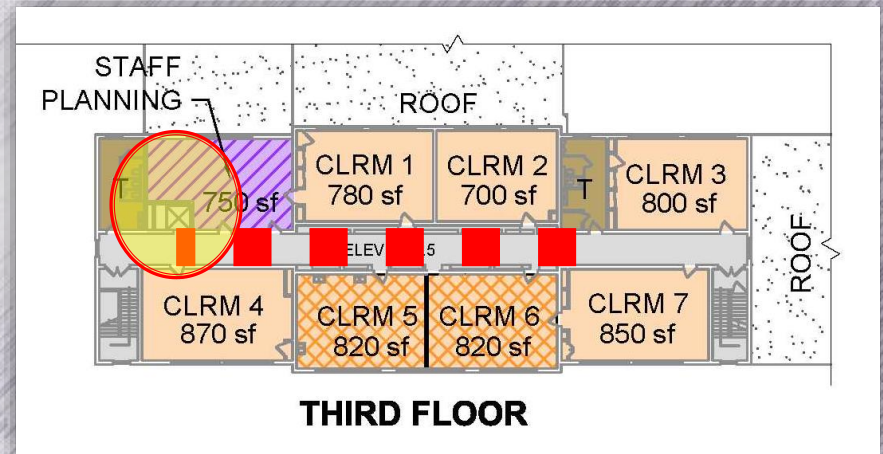
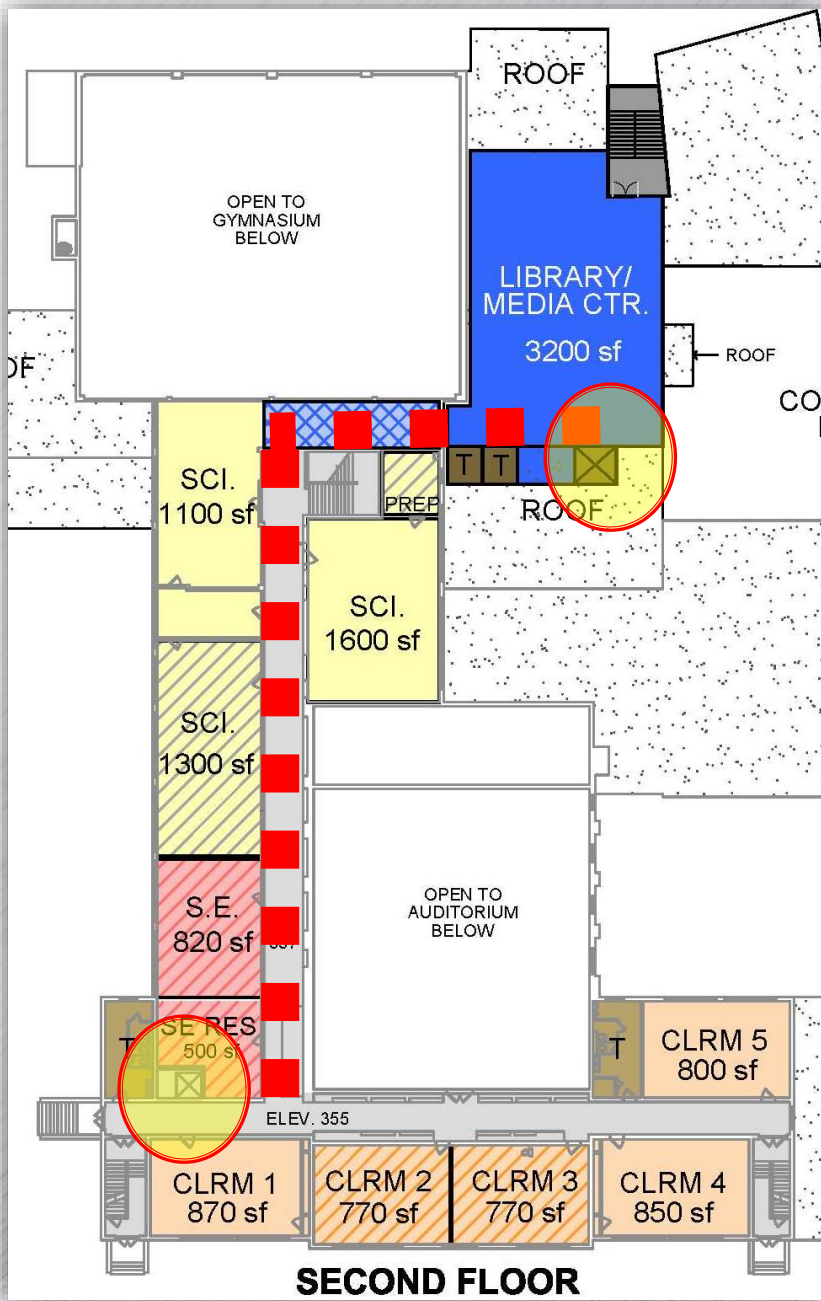


FIRST FLOOR
NORTH ENTRANCE
LEVEL





FIRST FLOOR
NORTH ENTRANCE
LEVEL

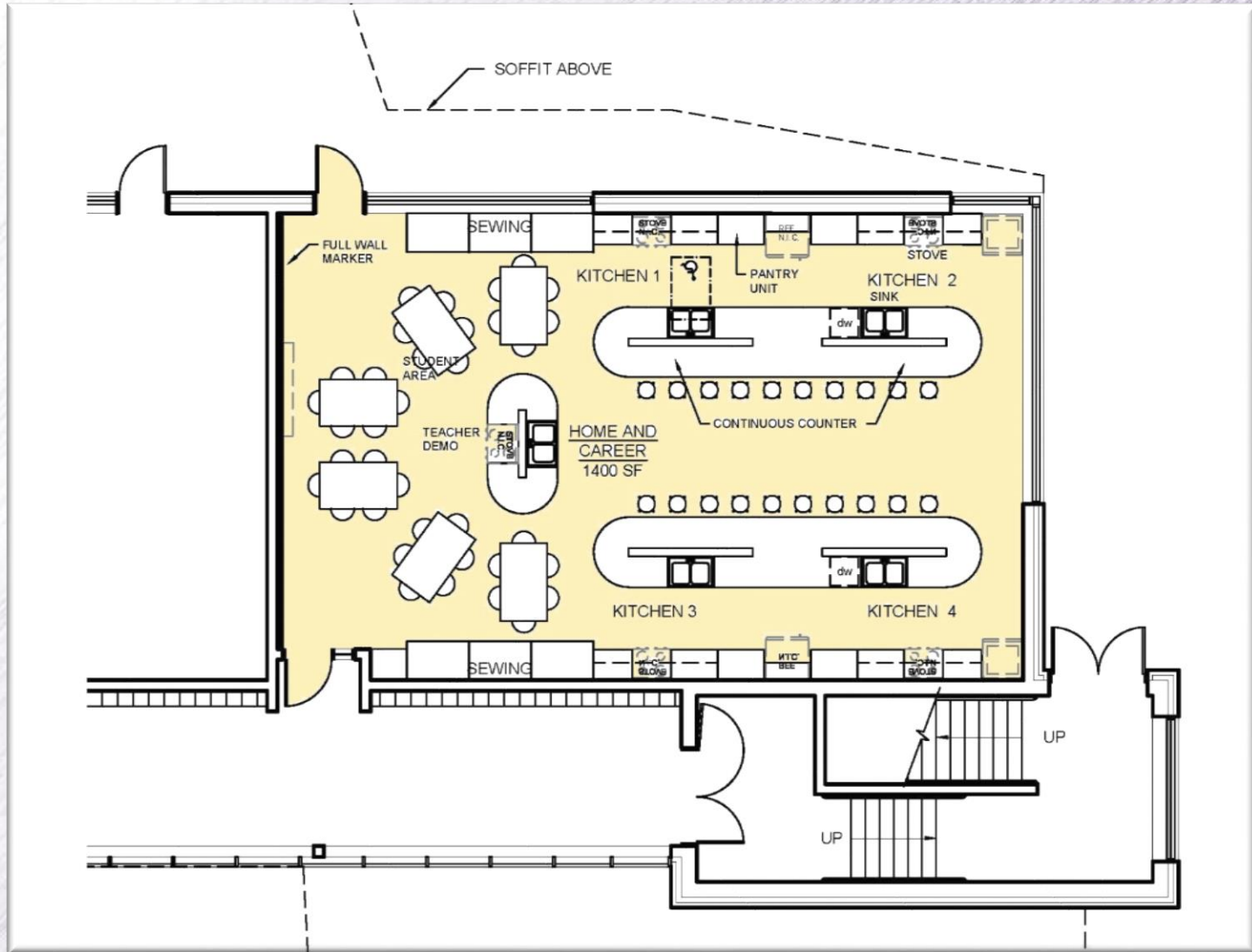


MIDDLE SCHOOL

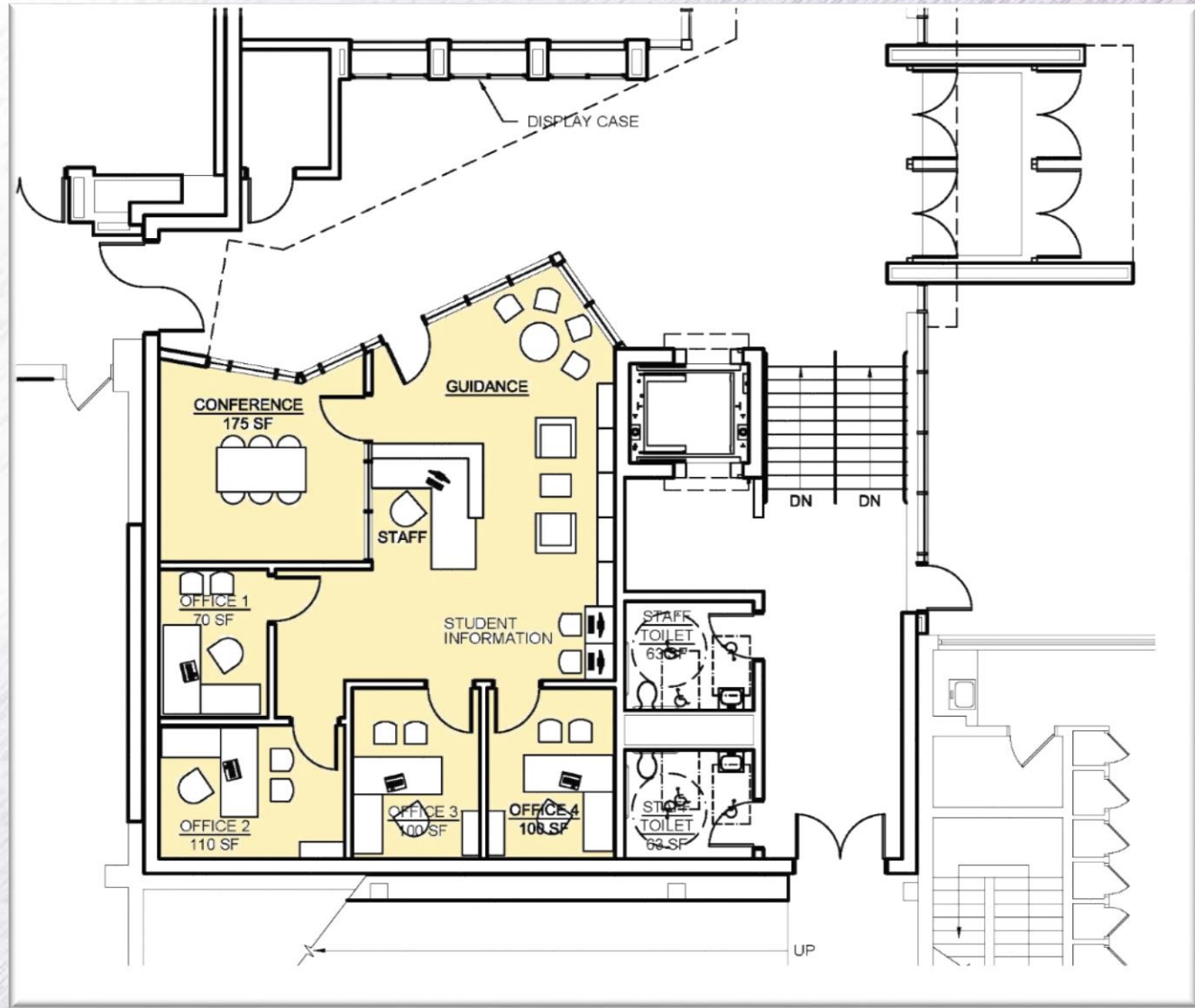
PROCESS

MEETING WITH PRINCIPAL ON
INTERIOR LAYOUTS

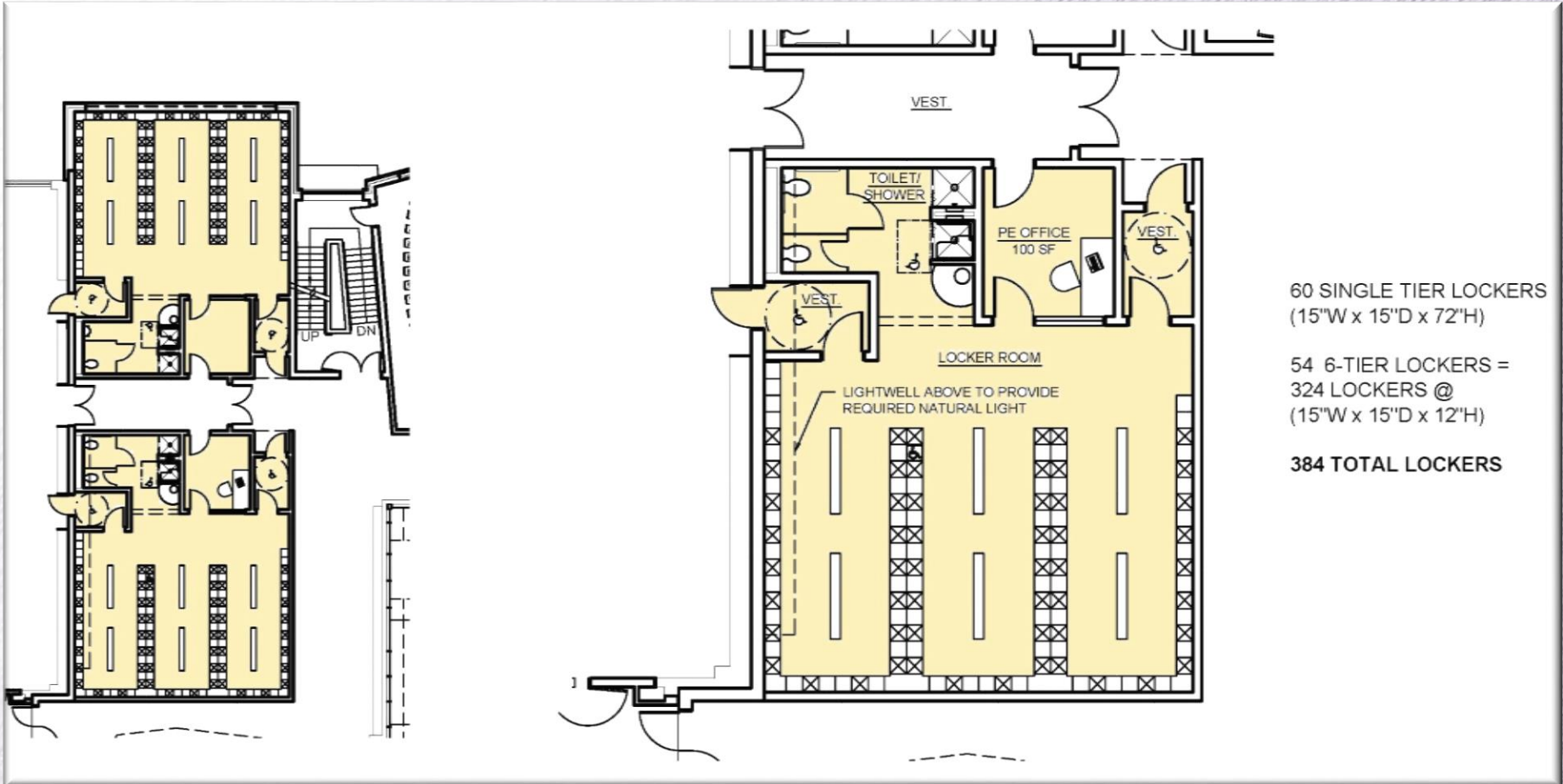
HOME CAREER



GUIDANCE



LOCKER ROOMS

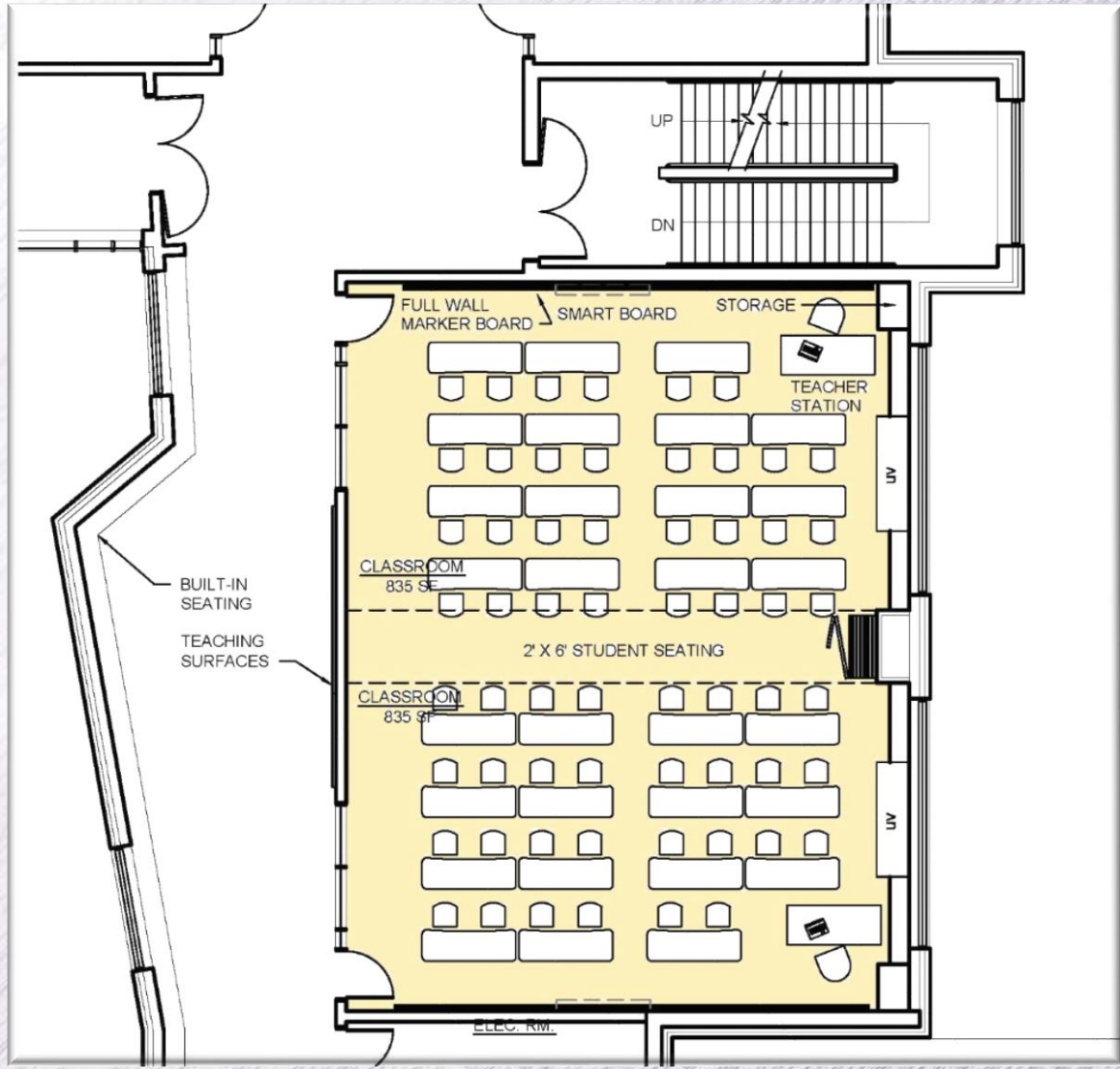


60 SINGLE TIER LOCKERS
(15"W x 15"D x 72"H)

54 6-TIER LOCKERS =
324 LOCKERS @
(15"W x 15"D x 12"H)

384 TOTAL LOCKERS

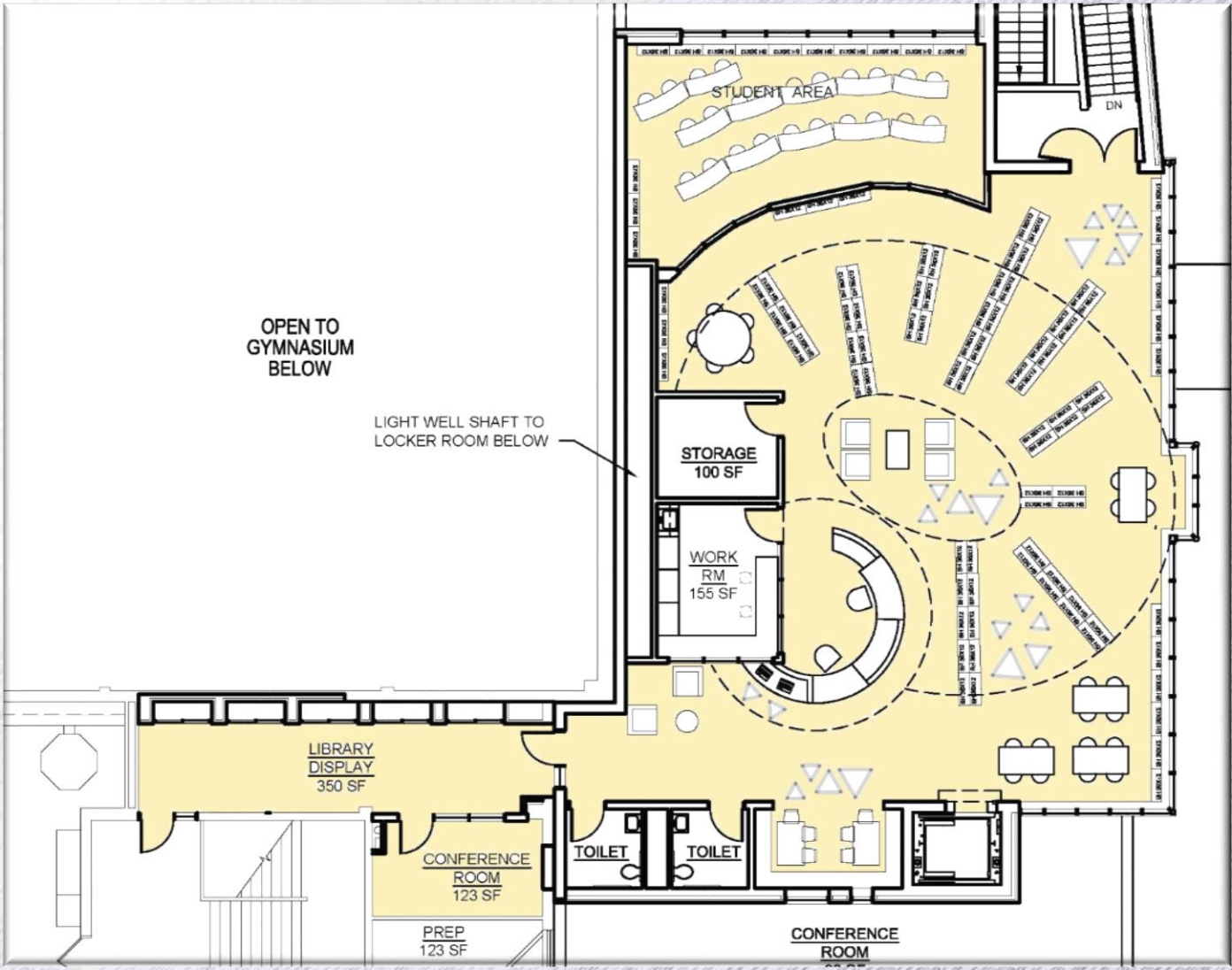
NEW CLASSROOMS



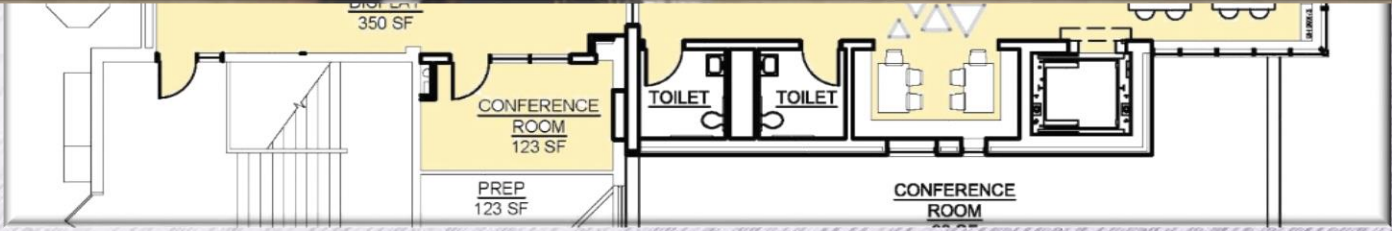
NEW CLASSROOMS



LIBRARY



LIBRARY



MIDDLE SCHOOL

DISCUSSION ITEMS

BOILER PLANT TYPE

TYPICAL SECTIONAL

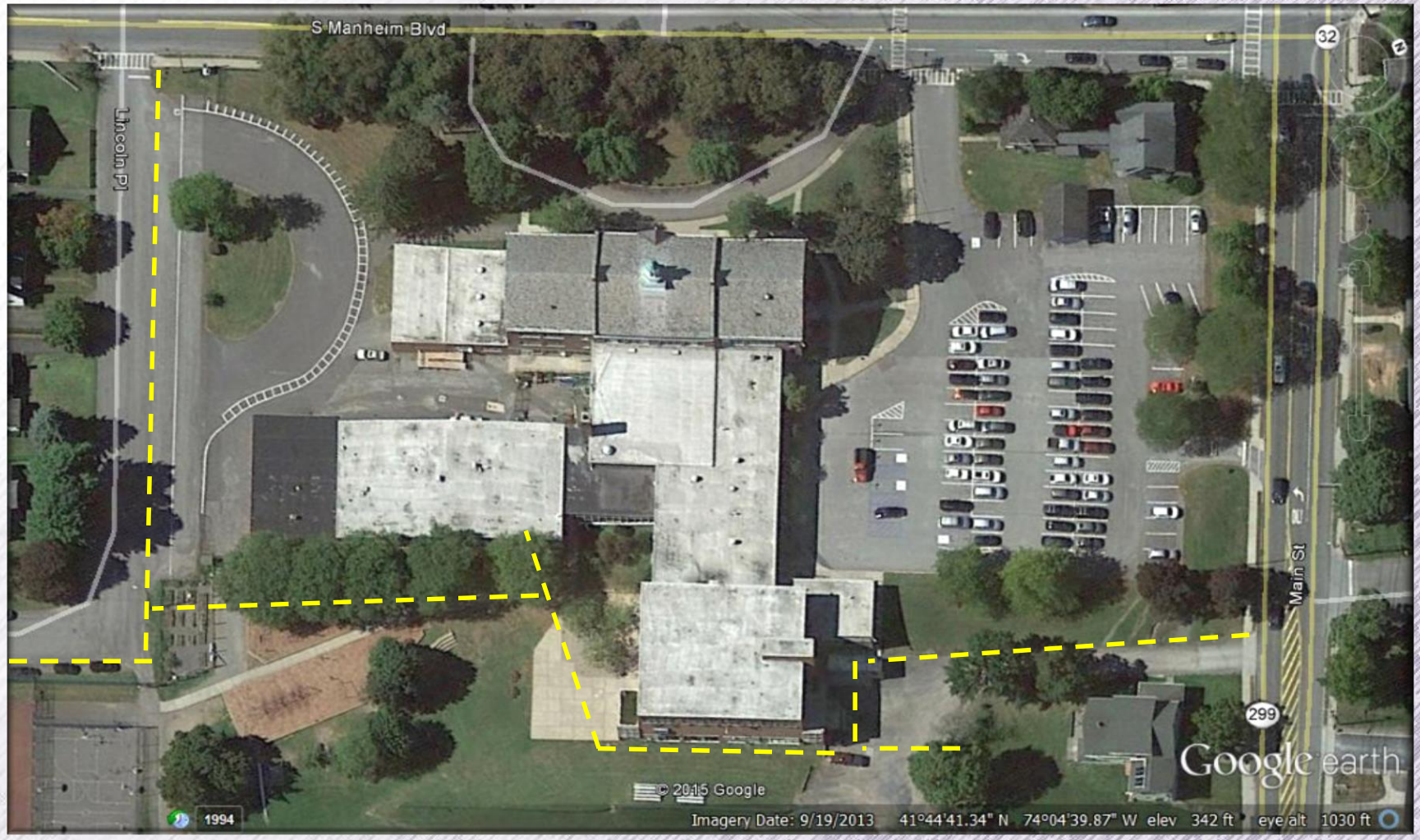
CONDENSING

FUEL SOURCE

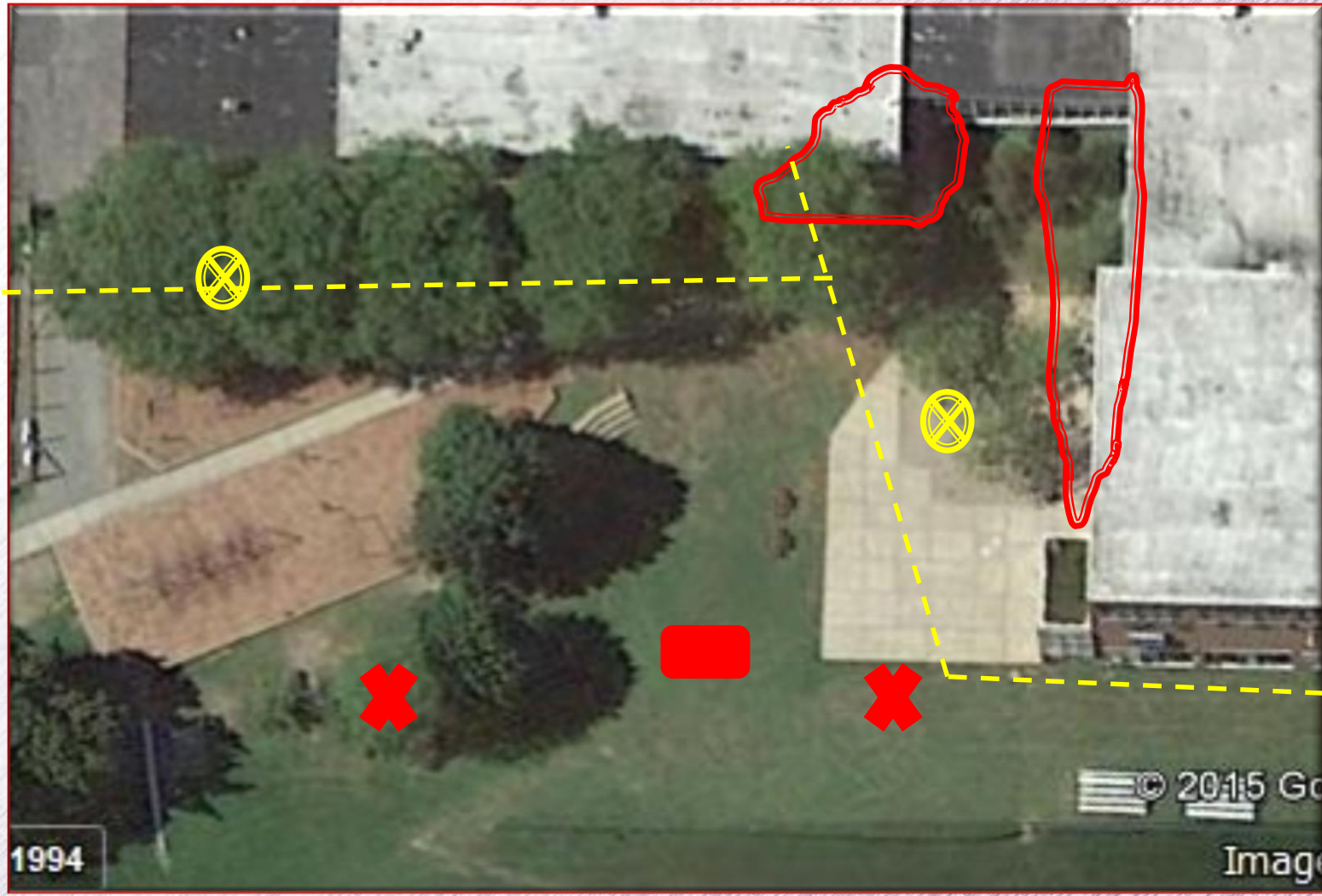
NATURAL GAS & OIL

SITE RELATED ITEMS

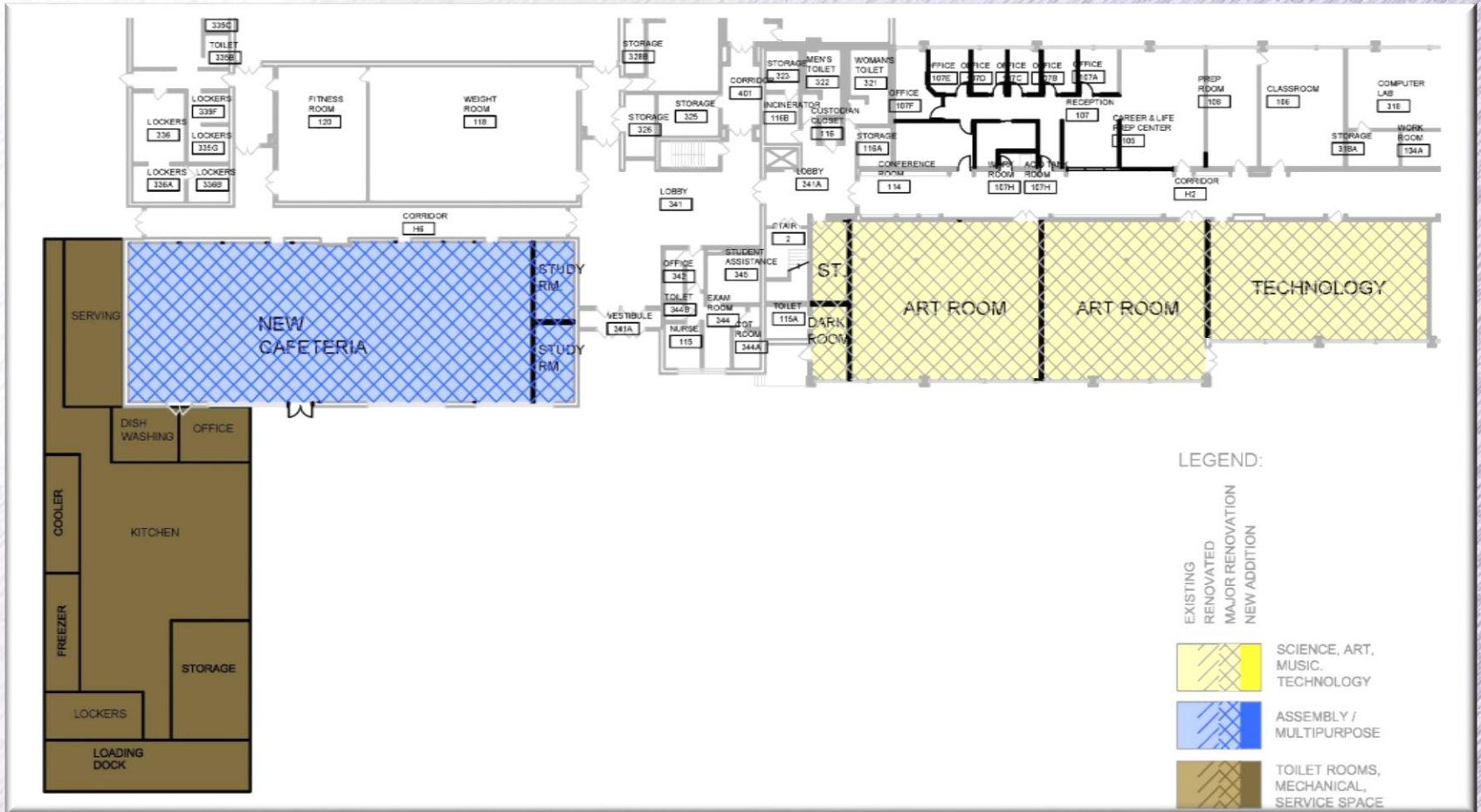
MIDDLE SCHOOL



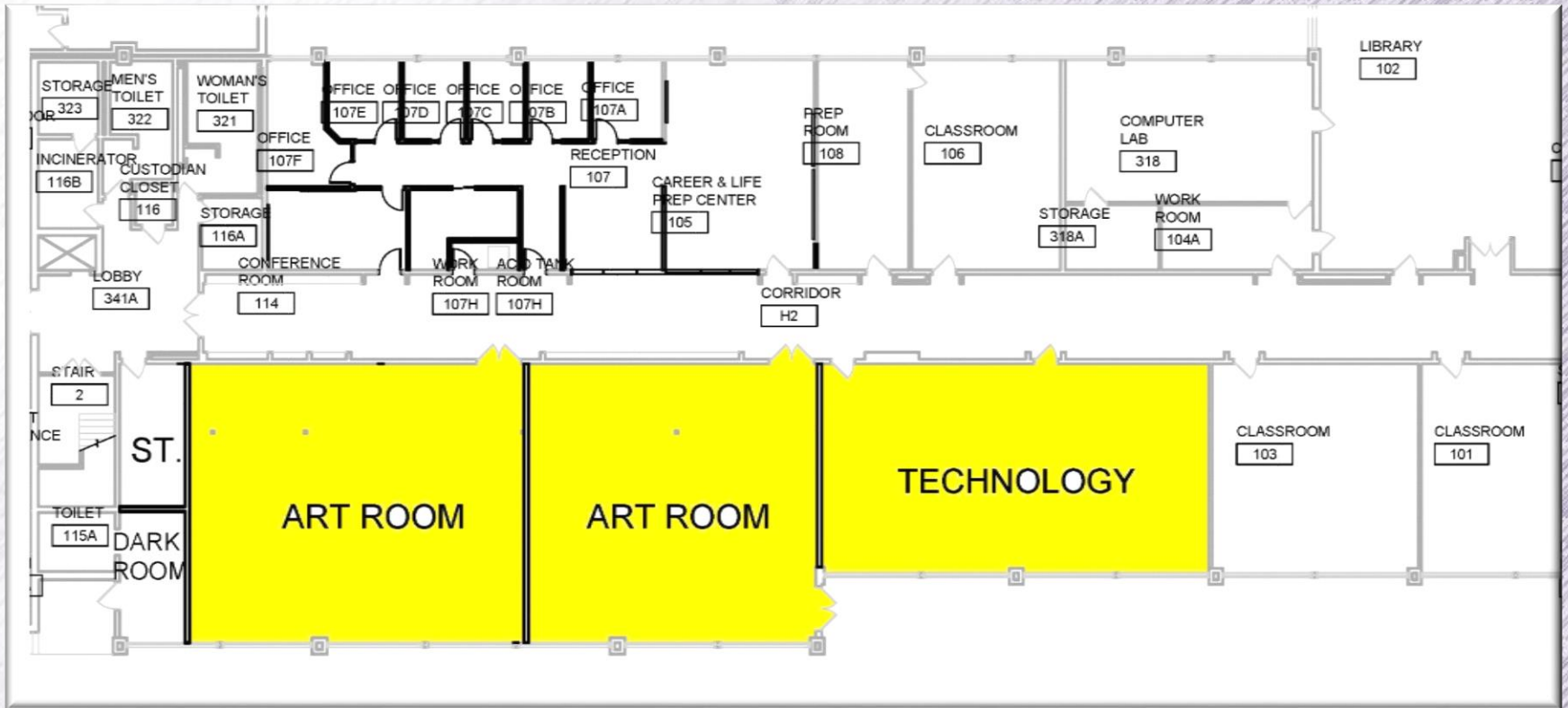
MIDDLE SCHOOL



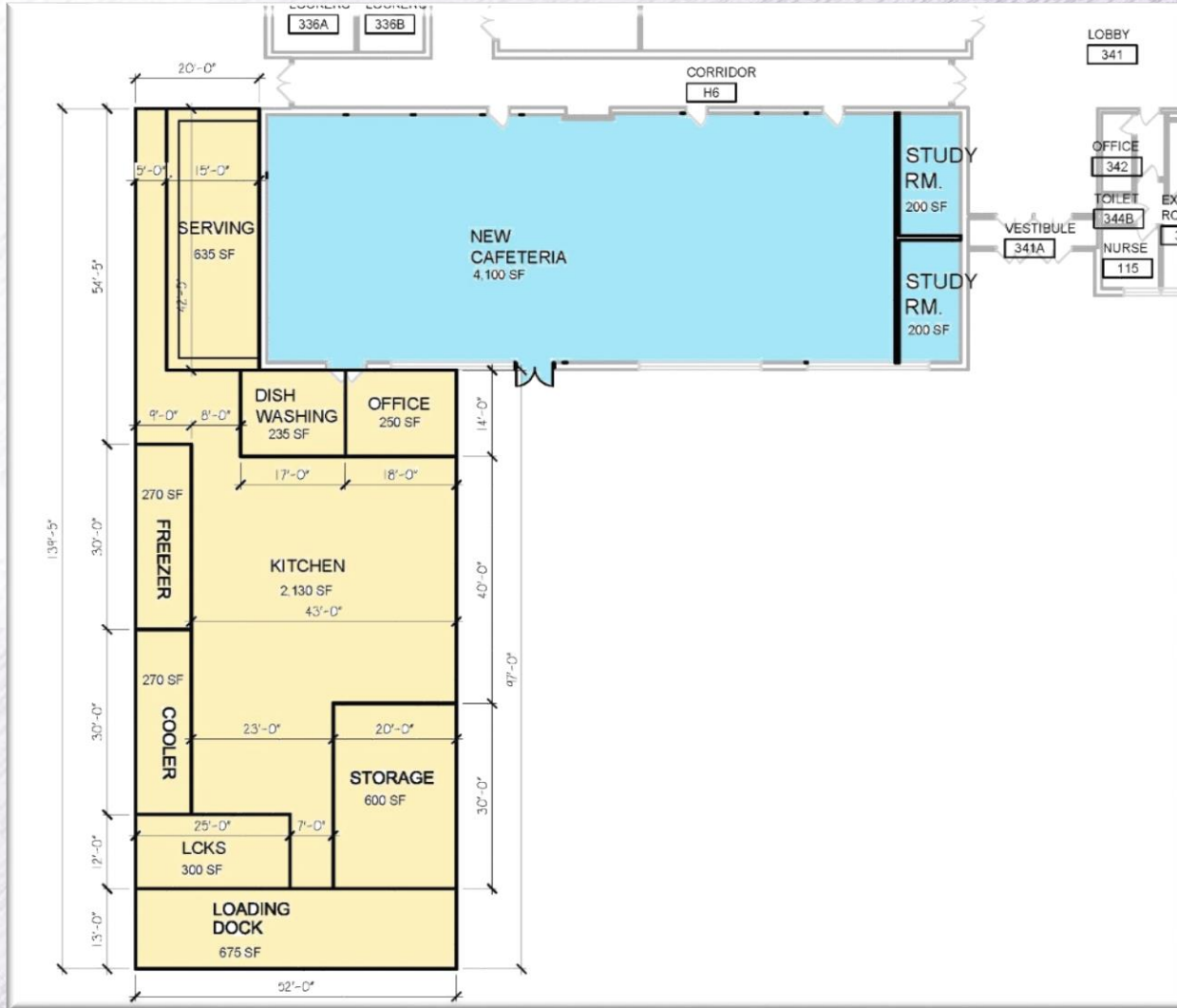
CENTRAL KITCHEN



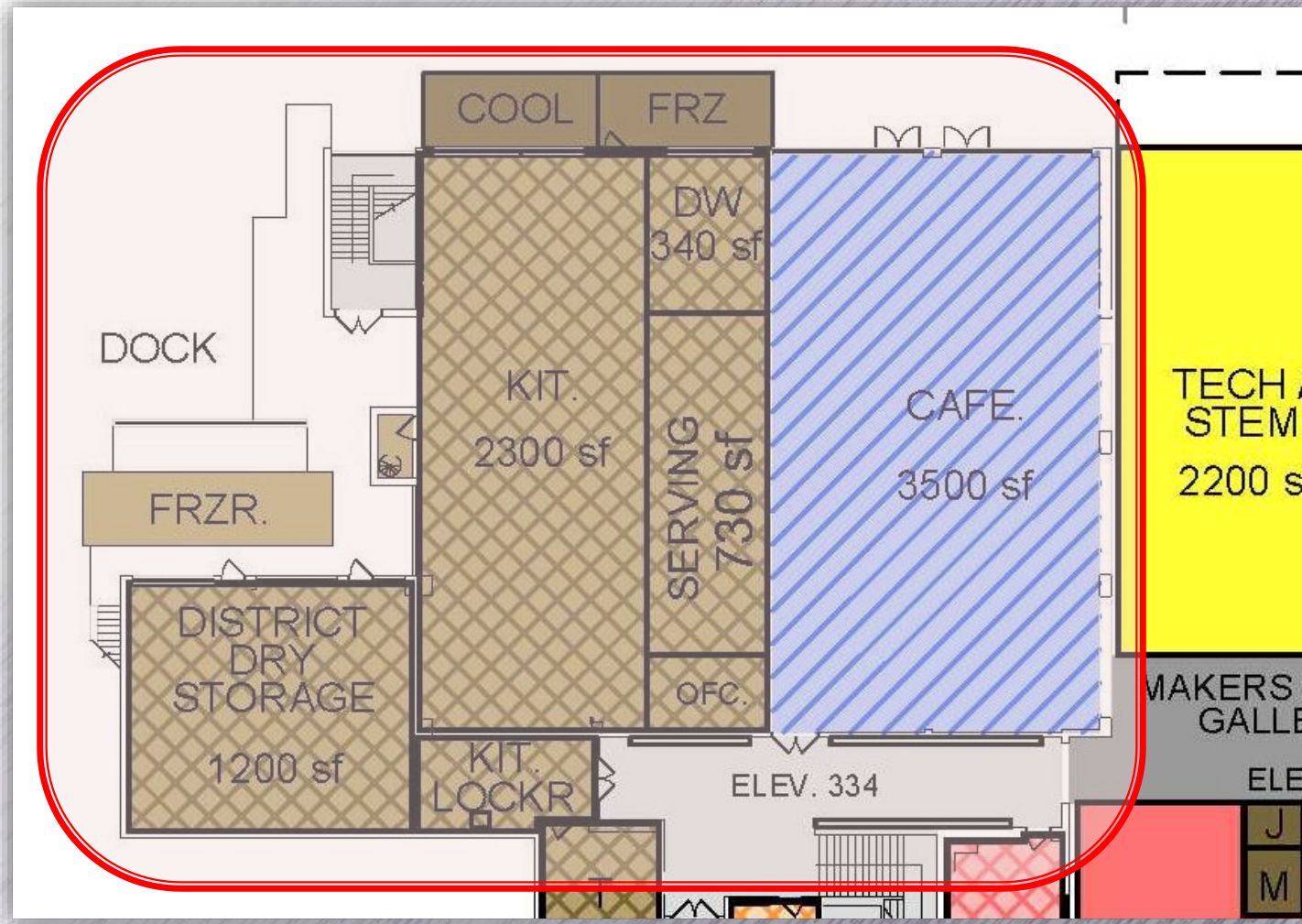
CENTRAL KITCHEN



CENTRAL KITCHEN



RECOMMENDATION



BUS GARAGE SEPTIC

DISCUSSION ITEMS

EXISTING HS SEPTIC FIELD

CAPACITY - 12,000 GPD sand filter

EXISTING HS

2014/15 - 773 STUDENTS

WATER DATA READINGS AVG 8.10 GPD

TOTAL BUILDING USAGE 6,261 GPD

BUS GARAGE SEPTIC

DISCUSSION ITEMS

EXISTING BUS GARAGE

60 BUS DRIVER +20 MECHANICS/OFFICE
STAFF

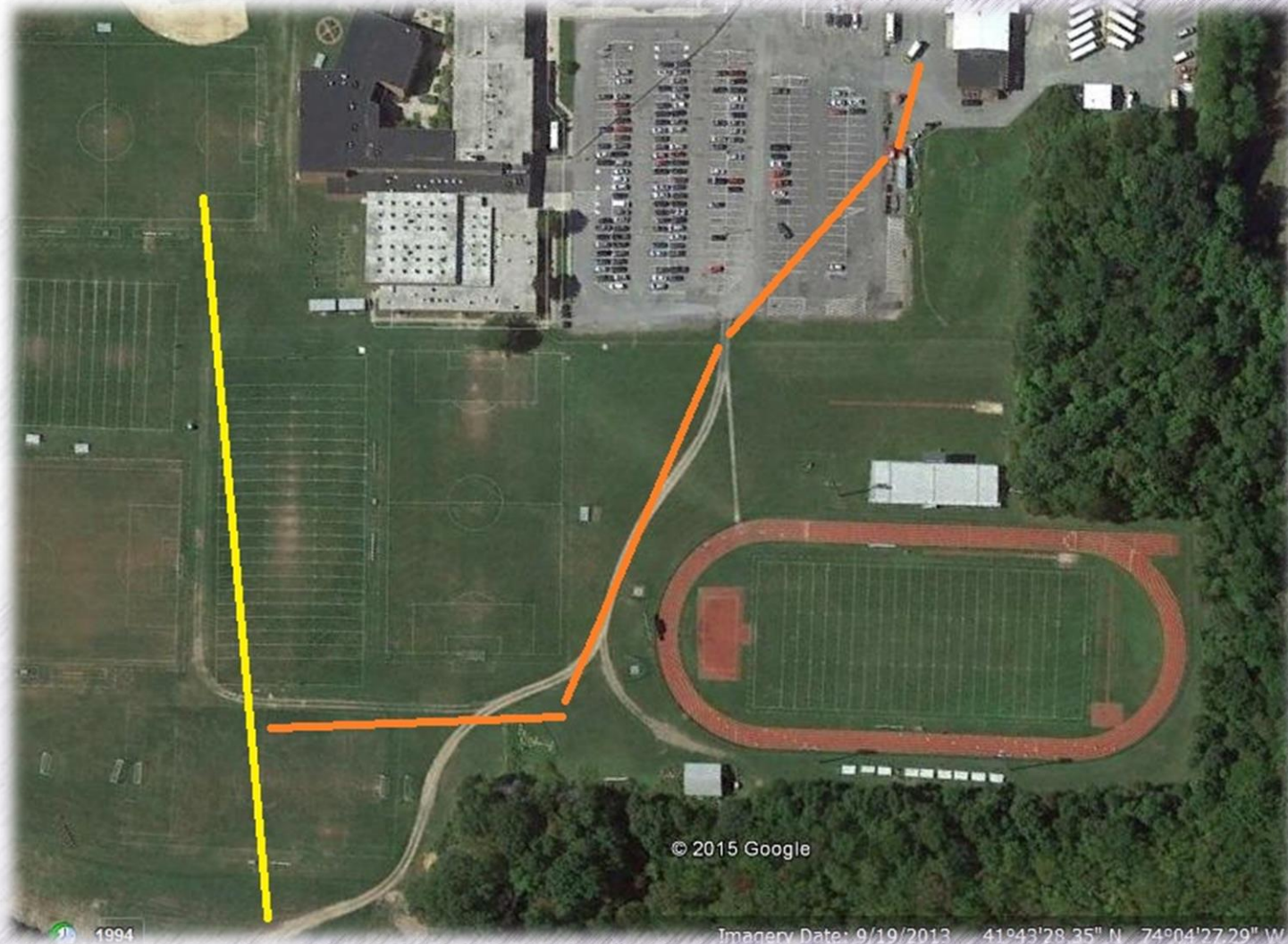
NYSDEC DESIGN REQUIREMENTS

15 GPD PER PERSON =1,200 GPD

NEW SEPTIC WILL BE HANDLING

7,461 GPD - UNDER CURRENT CAPACITY

BUS GARAGE SEPTIC





BOE - UPDATE

SEPTEMBER 2, 2015